

Item_no	Qty	Description	Manufacturer	Part Number
1	1	AM572X GP EVM, LCD MODULE	PTI	TI_AM572x_LM_RevA2a
2	1	LCD,CAP TOUCH,TFT,800X480	OSD	OSD070T1718-19TS
3	1	SERIAL # AND BARCODE LABEL (wwyy4P57nnnn)	PTI	1/4" x 1.5"
4	8	MACHINE SCREW PAN PHILLIPS 4-40 x 0.375	B&F Fastener Supply	PMS 440 0038 PH
5	8	WASHER FLAT #4 STAINLESS STEEL	B&F Fastener Supply	FWSS 004
6	4	WASHER SPLIT LOCK #4 STEEL	Keystone Electronics	4693
7	4	ROUND STANDOFF 4-40 ALUM 1-1/2"	Keystone Electronics	3483
8	4	BUMPER CYLINDRICAL 0.5" DIA BLK	Keystone Electronics	720
9	4	WASHER FLAT #4 FIBRE	Keystone Electronics	3116
10	8	MACHINE SCREW PAN PHILLIPS 4-40 x 0.312	B&F Fastener Supply	PMS 440 0031 PH
11	4	3/16 HEX FEMALE STANDOFF 4-40 x 19/32"	RAF Electronic Hardware	2058T-440-AL
12	2	3/16 HEX FEMALE STANDOFF 2-56 x 19/32"	RAF Electronic Hardware	2058T-256-AL-7
13	4	MACHINE SCREW PAN PHILLIPS 2-56	B&F Fastener Supply	PMSSS 256 0025 PH
14	4	WASHER INT TOOTH #2 STN STEEL	B&F Fastener Supply	INT LWSS 002
15	4	WASHER FLAT #2 STEEL	B&F Fastener Supply	SAEFZ 002

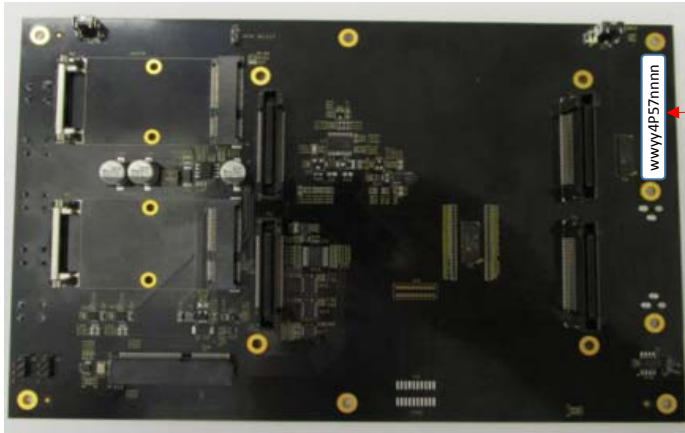
Notes:

\* Items 4 - 9 is the hardware used to stand the LCD board off the table.

# Items 10 - 11 is the hardware used to mount the PM board to the LM board.

& Items 12 - 15 is the hardware used to mount the CM board to the LM board.

# LCD MODULE BOTTOM SIDE



**Serial No LABEL**

Place on RIGHT Edge BOTTOM side of LM PC

